

ADVANCEMENTS

A PUBLICATION OF THE MISSOURI STATE UNIVERSITY FOUNDATION | SPRING 2023



**From agriculture photographers to food-establishment founders,
FOUNDATION SCHOLARSHIPS
HELP STUDENT ENTREPRENEURS
REACH THEIR DREAMS**

Caitlin Jedlicka loves to capture images of cattle. Brandon Stockstill sells smoothies, acai bowls and more. Both of these graduate students received scholarships that helped them build these businesses while completing their studies.



Join us for an event at The Old Glass Place: FOUNDATION PURCHASES DOWNTOWN VENUE

The Missouri State University Foundation now owns The Old Glass Place in Springfield.

The downtown space, at 521 E. St. Louis St., serves as a wedding and event venue. The foundation has rented the space for many galas and functions throughout the years.

The venue will be managed by 425 Downtown LLC. It will continue to be available to the public for banquets, parties, weddings, meetings and more.

It will also be a meeting space option for university faculty, staff and student groups.

This acquisition was made possible in part by a significant gift from the venue's previous owners, Al Miller and Roger Malarkey.

A ribbon cutting was held Feb. 23.



**THE OLD
GLASS PLACE**

Missouri State University
Foundation

To inquire about booking a future event or for more information:

 **417-501-8035**

 **Info@TheOldGlassPlace.com**



Al Miller and Roger Malarkey with Cliff Smart. PHOTO BY KEVIN WHITE

ADVANCEMENTS

SPRING 2023

MISSOURI STATE UNIVERSITY OFFICE OF UNIVERSITY ADVANCEMENT

- Debbie Branson, *Director of Foundation Relations*
- Scott Carter, *Director of Development*
- Jacqui Coones, *Executive Director of Prospect Development*
- Kerry Dickerson, *Senior Director of Athletics Development*
- Katie Dudden, *Assistant Director of Donor and Alumni Relations, MSU-West Plains*
- W. Brent Dunn, *Vice President for University Advancement*
- Greg Fansler, *Executive Director of Engagement and Alumni Relations*
- Wendy Ferguson, *Assistant Vice President for Development and Strategy*
- Arianna Gardner, *Assistant Director of Student and Young Alumni Engagement*
- Paige Grisham, *Director of Athletics Development*
- Alison Harper, *Director of Annual Funds*
- Cindy Howell, *Director of Development*
- Patty Ingle, *Director of Development*
- Denise Kettering, *Director of Advancement Services*
- Lindsey McDaniel, *Assistant Director of Prospect Development*
- Kelsey Menefee, *Director of Donor Relations and Special Events*
- Beth Nichols, *Assistant Director, Chapter and Corporate Engagement*
- Rachel Peterson, *Director of Development and Annual Giving, MSU-West Plains*
- Angela Pinegar, *Assistant Director of Advancement Services*
- Angela Rowe, *Strategic Communications and Content Specialist*
- Karl Schmidt, *Executive Director of Major and Planned Giving*
- Natalie Seever, *Business Process and Reporting Analyst*
- Stephanie Smith, *Senior Director of Donor Relations and Special Events*
- Jo Spurrier, *Director of Leadership Annual Giving*
- Abby Wilken, *Assistant Director of College and Constituency Engagement*

MISSOURI STATE UNIVERSITY FOUNDATION BOARD OF TRUSTEES EXECUTIVE COMMITTEE

- Mark L. McQueary, *chair, Springfield*
- James H. Wilson, *chair elect, Springfield*
- Judy Breeding, *Springfield*
- Bonnie O. Campbell, *Houston, Texas*
- Tim Foote, *The Villages, Florida*
- John D. Foster, *Springfield*
- Diane L. Jenkins, *Tulsa, Oklahoma*
- Beverly Keltner, *Springfield*
- Mary H. Schrag, *Springfield*
- L. Joseph Carmichael, *immediate past chair, ex-officio*
- Clifton M. Smart III, *president, Missouri State University, ex-officio*
- Dr. Anson Elliott, *Board of Governors, ex-officio*
- Brad Coy, *Alumni Association, ex-officio*
- W. Brent Dunn, *executive director of the Missouri State University Foundation, ex-officio*
- Stephen C. Foucart, *treasurer, ex-officio*
- Cindy R. Busby, *secretary*

PUBLICATION PRODUCED BY MSU DIVISION OF MARKETING AND COMMUNICATIONS

- Publisher:** Office of creative services
- Director of creative services:** Veronica Adinegara
- Magazine managing editor:** Michelle S. Rose
- Magazine art director and designer:** Teri Poindexter
- Content manager and approver:** Stephanie Smith
- Staff photographers:** Jesse Scheve, Kevin White
- Staff writers:** Juliana Goodwin, Michelle S. Rose

CONTACT THE FOUNDATION

SPRINGFIELD
417-836-4143 • Foundation@MissouriState.edu
MissouriStateFoundation.org

WEST PLAINS
417-255-7240 • WPAdvancement@MissouriState.edu

Advancements magazine is published by Missouri State University. Postmaster: Send address changes to Missouri State University Foundation, 901 S. National Ave., Springfield, MO 65897

Missouri State University is an Equal Opportunity/Affirmative Action/Minority/Female/Veterans/Disability/Sexual Orientation/Gender Identity Employer and Institution

DEV 05-03-2022

Contents

On the cover



Caitlin Jedlicka photographed a farm in the winter. She is a graduate student who grew up in the cattle industry. Now, she runs CJ Creative. She specializes in taking photographs related to agriculture, but also captures portraits, engagements and graduations. Financial support at MSU has helped her run the business. SUBMITTED PHOTO



Scholarships help entrepreneurs 6
When Missouri State students receive private financial support, it helps them advance in other areas of their lives. Here are two stories of Bears who run businesses while they finish their studies.



Scholarship honors granddaughters 12
The Bill, Khloe and Tinsley Noonan Scholarship honors the 1974 graduate's family and his love for Missouri State.



Successful actor creates theatre scholarship 14
Al Corley found his lifelong love for the performing arts while he was a student at Missouri State.



Mom establishes arts scholarship for daughter 16
Amy Beth Sutton surprised her daughter with the Lillian Jean Hilmes scholarship as a holiday gift.



A FOCUS ON THE FUTURE

As we celebrate the accomplishments and impact of people like you, we recognize our work is not done and continued forward movement is essential.

The Missouri State University Foundation has had a rich history of cultivating engagement and financial response from alumni and friends since its inception in 1981.

Most recently, the foundation embarked on the largest comprehensive campaign in history (Onward, Upward) with a goal of \$250 million. We exceeded that goal, raising more than \$274 million.

Our work doesn't stop with this big accomplishment. Our work, and the impact that comes from it, will never stop.

Let's focus on our next steps as we continue to take Missouri State onward and upward. We've got a lot to do, and we aren't wasting any time getting started.

- **We will continue to engage our alumni.**

Alumni engagement is key to the university's long-term success. We have a talented engagement and alumni relations team. They are doing new things to meet alumni and friends where they are, and making it easier to engage with the university. Alumni engagement and all that comes with it will be even more critical as we strive to take the university to the next level.

- **We must continue to raise private support for the university so students, faculty, programs and campus can thrive.**

It is imperative we improve the physical campus and fund new programs to allow for the best Missouri State experience. It is also imperative we continue to prioritize student and faculty support. Student scholarships are life-changing to recipients, and faculty support allows us to recruit and retain the best faculty through fellowships, professorships and chairs.

- **It's time to go global: We must establish programs around the world.**

It's true, most Missouri State alums live in Missouri. But the university's reach is far and wide. We have alumni and friends in all 50 states and in more

than 93 countries. Engaging our worldwide alumni population is a goal that will make us a stronger overall university.

- **We must engage with students during their first semesters, telling them the story of the importance of giving back.**

Philanthropy doesn't start after graduation. We need to educate our students on the impact donors are making. This creates the next generation of Bears giving back. We have some exciting plans in the works to help us achieve this step.

- **We are going to improve and evolve the programming we offer you.**

The University Advancement team is working each day to be more effective. We are seeking better ways to communicate the foundation's message to alumni and friends near and far.

Though this is a time of evolution and growth for the foundation, one thing remains the same: Private support is necessary and critical to the success of Missouri State University. We are counting on our worldwide base of alumni and friends to grow with the foundation and the university as we make dreams come true for generations of Bears to come.

The leaders of the future must have an effective and fulfilling higher education experience. The world is depending on the Bears of the past, the Bears of the present and the many Bears to come — and the foundation and university are depending on you.

The future is bright, and I'm excited to be part of it. It's time to get to work!

Go Bears!

W. Brent Dunn
Executive director of the
Missouri State University Foundation and
vice president for university advancement

BRENT'S TOP 5

THE TOP 5 THINGS I LOVE ABOUT CAMPUS THIS TIME OF YEAR



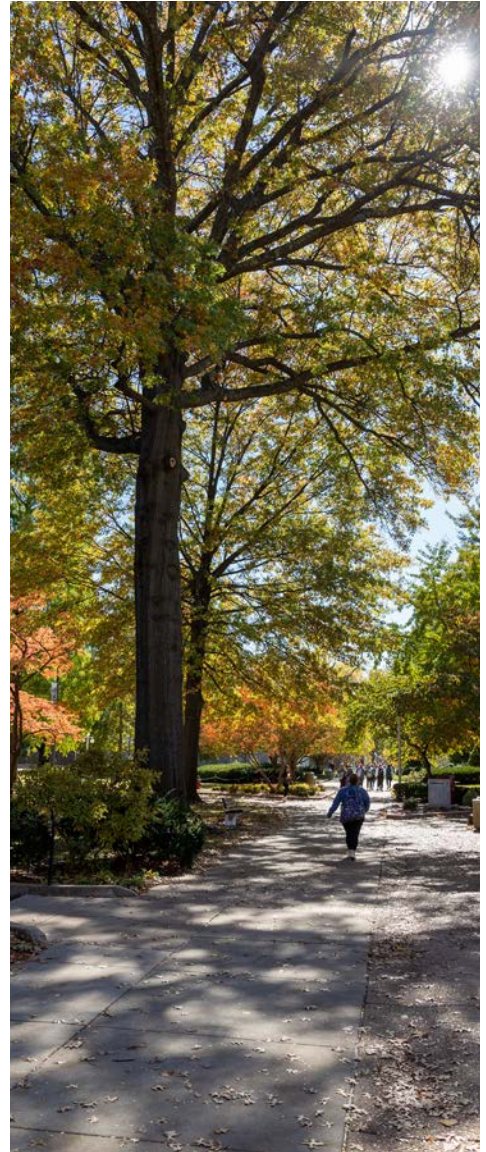
THE PHYSICAL BEAUTY

The grounds come back to life and the flowers bloom. Missouri State University is visually a beautiful place to be. During this time of year as things spring to life, it is as if the Earth knows the next graduating class of Bears is getting ready to embark on their own journeys into the future. My hat goes off to the amazing people at the university who work tirelessly no matter the season to make our campus the most beautiful place to be.



COMMENCEMENT

If you know me very well, you know commencement is one of my favorite things. Spring commencement is just around the corner. I can't wait to see families and loved ones fill Great Southern Bank Arena full of pride and well wishes. I also love to see thousands of Bears start the next chapter of their lives. For me to have the opportunity to speak at each commencement, congratulating graduates on becoming alumni, is one of the highlights of my career.



SCHOLARSHIP BANQUETS

As the academic year draws to a close, scholarship banquets are held across the university. These events give donors and scholarship recipients the opportunity to interact. They are one of my favorite things. They are a full-circle moment. The opportunity to see donor intentions fulfilled, and student gratitude expressed, is truly an honor.



TENT THEATRE

What an incredible legacy and tradition at Missouri State. Tent Theatre is a sign of summer. It means community, camaraderie and sold-out shows. And this year, the entire season will officially be held in the brand-new John Goodman Amphitheatre. It will be an exciting season for our students and patrons!

SUMMER IS AROUND THE CORNER

Let's be honest, I love summer. I love hot weather — I don't like being cold. But the summer at Missouri State really means getting ready for fall. Summer always flies by in a blink, filled with preparations for a new academic year. Sometimes it is a little quiet, since we have fewer Bears on campus. But behind the scenes, the Bears who teach and work at Missouri State are hard at work getting us ready. We love to see the students return, each and every year!

Scholarships help student entrepreneurs

REALIZE THEIR DREAMS



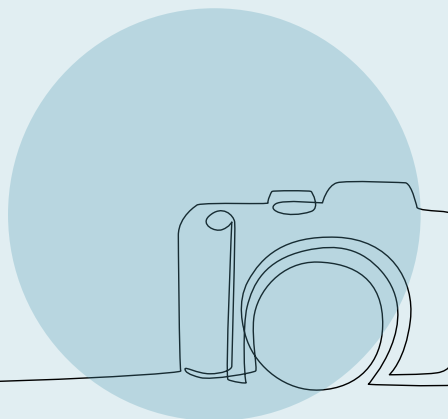
When students receive Missouri State University Foundation scholarships, they can advance in other areas of their lives. Here are two stories of Bears who run businesses while they finish their studies.

Written by Juliana Goodwin



Caitlin Jedlicka has built a thriving business in agriculture photography. PHOTO BY KEVIN WHITE

TELLING STORIES THROUGH AGRICULTURE PHOTOGRAPHY



Caitlin Jedlicka's family has always raised cattle.

They started with Herefords, then expanded into Charolais. That has become their predominant breed.

Growing up, Jedlicka showed cattle in the summer. She also bathed some of the herd, fed them and helped put up hay. In winter, she'd cut ice and even help deliver calves.

Farm life instilled a strong work ethic and a sense of respect for others.

"Learning the value of hard work has pushed me. I want to get as much as I can out of my education so I can be where I want to be in the future," Jedlicka said.

When Jedlicka was 12, she picked up a camera to compete in the Charolais Junior National photo contest.

That's where she first discovered a love of photographing cattle.

At Missouri State, Jedlicka learned how to market that passion. She has built a thriving photography business, even though she's a graduate student.

Financial aid allows focus on education

Jedlicka grew up on a family farm in Koshkonong, Missouri, a town south of West Plains with a population of 196.

"I grew up showing cattle and was introduced to the show program at MSU through Journagan Ranch," Jedlicka said. "Growing up in the cattle industry, I developed a passion for telling the true stories of agriculture."

Her mom is also a Bear, and Jedlicka decided to pursue a degree in agriculture communication at MSU. The first year she lived in a Living Learning Community, or LLC, dedicated to ag students. In LLCs, students with similar academic or lifestyle interests live, study and socialize together on campus.

"I loved it," she said.

It helped her connect with other Bears with ag backgrounds.

"We had the same classes, ate dinner together, were a group of really good friends. It felt like home. Sometimes in a city on a new campus, you can't get that feeling."

Jedlicka received an academic scholarship.

In her junior and senior years, she also received the Vernon Renner Scholarship. This is a privately funded scholarship from the Missouri State University Foundation.

"I was super excited and blessed," she said.

"Being a farm kid, paying for college is always something that weighed heavy on my mind. Knowing I wouldn't have to worry as much about academic expenses, and that more could go back towards my cattle herd, was a relief. I felt truly grateful."





Jedlicka graduated with a bachelor's degree in agricultural communication in 2022.

Skills learned in MSU classes help her business flourish

During her undergraduate studies, she took an ag photography class. It helped her polish her artistic, communication and marketing skills.

Jedlicka decided to start her own business while she was still a student.

In 2021, she founded CJ Creative. She specializes in agriculture images, but also captures portraits, engagements and graduations.

She works with farmers, breeders and livestock shows. She'll spend a day shadowing a farmer, capturing moments and then using the images in marketing or social media materials.

Sometimes, farmers hire her to photograph their herd so they can use it as artwork in their homes.

She also recently completed a photography internship with Legacy Livestock.

The 22-year-old juggles all this while earning a master's degree in agriculture with an emphasis in ag communications.

She is also a teaching assistant and member of Ag Communicators of Tomorrow.

"Everything at Missouri State has taught me how to be a better entrepreneur and a better person."

She will graduate in May 2024.

MSU support helps her future

Jedlicka's dream is to become a college professor: She wants to teach others how to tell the stories of ag.

She also wants to continue her growing photography business and build her own cattle herd.

The financial support she received has helped Jedlicka set these goals.

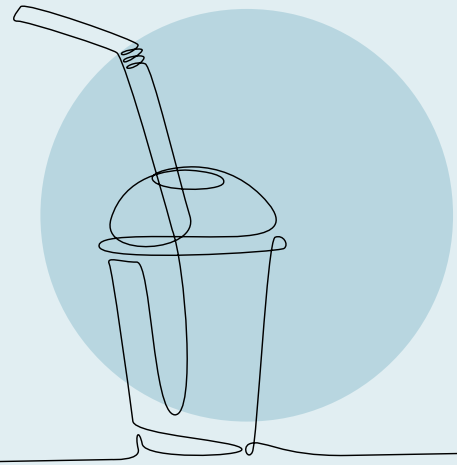
"To the donors of the scholarship, I am extremely grateful for the opportunity to continue my educational experience with your assistance. I'm beyond thankful."



DOWNTOWN
HEALTH BAR



SCAN ME



BUILDING TWO BUSINESSES WHILE EARNING AN MBA

Brandon Stockstill can't believe how much Missouri State has changed in recent years.

"I remember touring campus as a high school senior. In 10 years, it's like: 'Holy cow! They've absolutely transformed the campus.' They're building new buildings, adding on to Glass Hall, so many changes. This place is beautiful. I'm proud to be a Bear and a graduate of Missouri State."

Stockstill received his bachelor's degree in general business in 2016. He is now an online MBA student who will graduate in fall 2023.

Like many MBA students, he works full time. But Stockstill is also a business owner.

Private support has helped him juggle all the responsibilities in his life.

MSU staff member encouraged him to apply

Stockstill and his wife Brittny own both Downtown Health Bar in Springfield and Bowl Behavior in Bolivar. They serve smoothies, acai bowls, protein drinks and other fare.

They originally bought what was then Downtown Nutrition Club in January 2021.

They have since rebranded into Downtown Health Bar.

Within three months of opening, they had a strong base of customers who were Bears.

The Missouri State support was a blessing, Stockstill said.

One of his customers was Stephanie Smith, senior director of donor relations and special events for the Missouri State University Foundation.

They got to know each other well, partially because Stockstill is always raving about MSU.

Downtown Health Bar has also donated to causes within the university.

"Whether I'm in Springfield or in Bolivar, I'm like, 'Hey, I'm a graduate of Missouri State.' The Bolivar store is next to the high school, and I tell high schoolers to go to Missouri State all the time."

After Smith got to know Stockstill and realized he was a graduate student, she encouraged him to apply for a scholarship through the foundation. He received the MSU General Support Scholarship.

Stockstill says he really appreciated the scholarship and the encouragement and gesture from Smith.

Second location also proves to be a success

Stockstill grew up in Fair Play, Missouri, a small town in Polk County.

Bolivar was the closest city. There, he'd shop for groceries and go out to eat, so it was a natural choice when he decided to open a second location.

"I know a lot of people in Bolivar, growing up in the community. And my mom worked at the newspaper for 30 years," he said.

As soon as they opened the location in Bolivar in July 2022, they knew they'd need to move to a larger location because it was packed all the time.

In March 2023, they moved to a larger space — increasing from 900 square feet to 5,000

square feet. They added a drive-thru and expanded the menu to include sandwiches, salads and more.

MBA is honing his skills, opening new doors

It's not easy running two stores in two different counties and working remotely on his master's degree, but it has been worth it.

The MBA program is heavily focused on finance, which has been challenging but rewarding for him.

"It's been just so much fun diving into finance," he said.

He has been poring over 10-K statements, comprehensive reports filed each year by publicly traded companies. He and others pick them apart and compare notes: "Okay, here's what I'm seeing versus here's what you're seeing."

It's great to talk with other like-minded professionals, he said.

"Normally, I get so wrapped up in life that it's difficult for me to do those things," Stockstill said.

Even though he's already a business owner, the MBA program helped him better organize a budget, think long term, forecast the next thing and work out payroll.

Now, the Stockstills are trying to decide if they should open a third location, franchise their brand or use his MBA to work for a corporation.

Regardless of what they decide, Stockstill's degree will be an asset.

"I'm just grateful to be a Bear and have that on my resume." ▼



Brandon Stockstill is earning an MBA as he and wife Brittny run two businesses. PHOTO BY JESSE SCHEVE

ALUMNUS CREATES SCHOLARSHIPS IN HONOR OF GRANDDAUGHTERS

Bill Noonan, a 1974 graduate, established the Bill, Khloe and Tinsley Noonan Scholarship.

WRITTEN BY JULIANA GOODWIN



Bill Noonan worked in gaming in Las Vegas until his retirement in 2019. MSU ARCHIVE PHOTO

When Bill Noonan's granddaughters get a little older, he plans to bring them to Missouri State to show them around campus.

He hopes one of them will want to attend when the time comes. But more importantly, Noonan wants to show them the university where he established the Bill, Khloe and Tinsley Noonan Scholarship in their honor.

Khloe is 13 and Tinsley Rose is 7. They live minutes away from him in Las Vegas and are very close. Noonan jokes he's Khloe's "Uber driver," and he walks Tinsley to school many days.

"I really wanted to do it so I'd have a long-term legacy with my granddaughters," Noonan said. "My name and their name will forever be associated with the scholarship."

Giving back to areas that matter to him

Noonan graduated from MSU in 1974 with a major in political science and minor in economics. After earning his bachelor's, he pursued a master's degree in public administration from the University of Kansas.

"It was a very prestigious program; it was in the top three in the United States. And I never would've gotten in without the academic foundation I got at Missouri State," Noonan said.

His older sister, Jan Noonan Fax, graduated in 1969 from MSU. She is the reason he wanted to attend: His sister always boasted about her great experience.

Noonan loved his time on campus and was active in student government and student academic committees, and was a member of what is now the equivalent of the Economics Club.

He was also a founding member of Lambda Chi Alpha fraternity. Bonds with those brothers have lasted for decades.



Bill Noonan with Tinsley Rose and Khloe.

SUBMITTED PHOTO

"I have structured the scholarship so that an active member of Lambda Chi Alpha gets a preference when applying for one of them. It's a way I can give back to the college, give back to the humanities and economics department, give back to my fraternity — and all in the honor of my two granddaughters," Noonan said.

Establishing support for MSU faculty

Aside from the scholarships, he has established a professorship for humanities and economics — his areas of study.

Professorships help attract and retain stellar professors. Noonan said he had excellent professors in both departments and wanted to pay it forward by supporting faculty.

When he first started thinking about giving back, Noonan called his longtime friend Brent Dunn, executive director of the Missouri State University Foundation and vice president of university advancement.

"I said, 'You're probably not the guy, but can you send me to someone who helps with establishing legacy charitable donations?' and he said, 'I am your guy.' Brent helped me structure the whole program. We had it all put together and signed in less than 30 days. It was so easy. I couldn't have done it without him," Noonan said.

Building a career; holding leadership roles

After earning his master's degree, Noonan was an assistant city manager in Springfield.

He went on to become a city manager in two cities in Florida.

Then in 1990, he was recruited to Las Vegas to be their city manager — and he's lived in Vegas ever since.

In 1992, he was recognized by MSU for his career path by receiving the Outstanding Young Alumni Award.

In 1993, legalized gaming was expanding around the country. He was approached by gaming companies that wanted to expand, but didn't understand local government.

He had a unique skill set because he understood both government and gaming. He moved from the public to the private sector, and spent the rest of his career there.

Noonan ran an off-strip casino in Vegas for a while, then went to work for Boyd Gaming. During his time in Vegas, the city and gambling industry expanded tremendously.

In 2000, he was the Casino Management Association's Gaming Professional of the Year.

In 2017, Noonan was sworn in as the chairman of the Las Vegas Metro Chamber of Commerce. It was the first time in more than 20 years that someone from the gaming industry served as chair.

He also served as vice chairman of both the Nevada Resort Association and the Las Vegas Convention and Visitors Authority, and was a member of the County Health Board.

In July 2019, he retired as senior vice president and a corporate officer at Boyd Gaming.

Creating a legacy for his family after a loss

After retirement, Noonan and his wife of 38 years, Sylvia, were able to take a trip before the pandemic shut down travel. They loved to travel together and had visited Europe many times.

In 2022, Sylvia passed away. This prompted Noonan to start thinking about what to do to give back.

"When you get a little older, you start thinking about how you can pay it forward," he said.

"The scholarship and professorship were the first things that come to mind. It was a way to create a legacy for me and my granddaughters. I am proud to be able to give back to the Missouri State University Foundation." ▾

THE STORY BEHIND A SCHOLARSHIP

“I saw the shining impact Missouri State had on my life”

SUCCESSFUL ACTING ALUMNUS CREATES A SCHOLARSHIP FOR THEATRE STUDENTS

Al Corley, who once starred on “Dynasty,” visited Missouri State in 2022 for the first time in 40 years. He decided to give back to the place where he found his lifelong passion.

Written by Olivia Fowler

If you would’ve asked Al Corley what his future would look like when he was a freshman at Missouri State, a life in theatre wouldn’t have made it on the list.

“Missouri State was the beginning of everything for me. I hadn’t even seen a single play before coming here. Who would I be if I hadn’t come to MSU?”

He went on to star in the 1980s hit “Dynasty,” which led to a career in acting and producing.

Entering university as a Basketball Bear — then, an injury changes his path

Corley grew up in the small town of Waynesville, Missouri, and came to MSU on a basketball scholarship.

Corley fondly remembers his time on the team, though it was cut short by a severe leg injury in his sophomore year.

“Basketball was my life,” Corley said. “I thought my life was over; I had no idea what to do for the rest of my college career.”

Luckily, life in theatre was waiting for him in the wings.

How he entered the “strange and wonderful world of theatre”

Corley went on a blind date with a theatre student shortly after his injury.

“She saw that I wasn’t sure where to turn next and suggested I take an acting class,” Corley said. “At first I thought that seemed crazy, but she convinced me that I might like it. Turns out I did.”



Al Corley (center, in black shirt and tan jacket) was among the stars of “Dynasty: The Miniseries” in 1991. He was in the cast along with Kathleen Beller, Maxwell Caulfield, Joan Collins, Linda Evans, John Forsythe, John James, Heather Locklear and Robin Sachs. PURCHASED PHOTO

Corley’s first show was a Tent Theatre production of “Godspell.” He was instantly hooked.

A friend introduced Corley to John Goodman, fellow athlete and “theatre kid.” A senior when Corley was a sophomore, Goodman — who had been a football Bear — showed Corley the possibility of moving from athletics to performing arts.

“John was a mentor to me, though he had no idea the impact he had,” Corley said. “I looked to him when first trying to navigate this strange and wonderful world of theatre. I dove in feet-first... and head-first. I entirely changed my life trajectory from pre-law to theatre.”

Al Corley, continued on page 26

THE STORY BEHIND A SCHOLARSHIP

NEW SCHOLARSHIP WILL BENEFIT RICHARDS R-V SCHOOL DISTRICT

The Donna S. and Michael D. Hayes Scholarship, created by an estate gift, honors a couple synonymous with this rural school district near West Plains.



Michael D. and Donna S. Hayes SUBMITTED PHOTO

For 37 years, the late Donna Hayes gave students in the Richards R-V School District the educational tools they needed to learn and grow.

She and her late husband, Michael, have now given the school's graduates the financial support they need to pursue a college education at Missouri State University-West Plains or Missouri State University in Springfield.

The Missouri State University Foundation recently received a \$500,000 gift from the estate of Michael D. Hayes to establish the Donna S. and Michael D. Hayes Scholarship Fund.

All money from the fund will be used to award scholarships to Richards R-V School District graduates who are seeking an undergraduate degree or certificate at either campus.

The scholarship is open to either traditional or nontraditional students.

"The legacy the Michael and Donna Hayes estate has created at Missouri State is incredible," said Brent Dunn, vice president for university advancement at MSU.

"It is scholarships like this that remind us of how a passion for good and the generosity of others changes the future of many."

About Michael and Donna Hayes

The scholarship fund honors a very special couple from West Plains.

Not only was Donna Hayes a long-time educator at Richards, but she was also a graduate of the school herself.

"She committed her life to reaching out and helping her pupils learn and succeed in their education, both at Richards and beyond," said a spokesman for the estate.

"Her pride and joy were when a former student greeted her, sharing news of their success and plans for the future. There are so many people whose lives were touched by both Donna and Mike. For this reason, it is fitting that this program has been created by the estate of Michael D. Hayes to honor Donna's life as a teacher and friend to Richards R-V students and families."

Richards R-V School Superintendent Dr. Melonie Bunn agreed.

"Donna was Richards School. Everybody knew Donna. She was a fabulous employee and an amazing teacher. It was her gift. Her classroom was like a perfectly choreographed dance routine. She didn't have children of her own, so we were her children."

Reaction at Richards R-V School

Bunn said school officials were "blown away" when they first heard about the gift, explaining it will be "life-changing" for the graduates who receive it.

"For a K-8 district, this is a huge gift," Bunn said. "We've talked with administrators at other school districts, and normally this is the type of gift a larger district would receive, not a K-8. There will be students who would not have the means to go to the university, or if they did, they would have had to take out loans. With this scholarship, they will be able to get their education without any debt at the end. And there will be people who have not had the ability to go to college who will apply for this. I've already had calls from people who've heard about it." ▾

THE STORY BEHIND A SCHOLARSHIP



“I am so thankful my mom did this. She knows the program had such a good impact on me. This will help other people have the same wonderful experience I did.”

Lillian Hilmes

Holiday present creates a legacy:

MOM ESTABLISHES ARTS SCHOLARSHIP IN HER DAUGHTER'S NAME

Amy Beth Sutton wanted to “love and honor” Lillian Hilmes, a successful graduate of MSU’s theatre and dance program.

Written by Juliana Goodwin

The day after Thanksgiving 2022, Amy Beth Sutton pondered what she’d give her adult daughter for the holidays.

“What the heck am I going to do for her for Christmas that is not a present? Because she doesn’t really need anything. We can tell our kids we love them, but how do we really show that we love and honor who they’ve become as a person?” Sutton said.

And then it came to her.

Sutton decided to establish a scholarship to benefit Missouri State University’s theatre and dance department, the area from which her daughter graduated.

Sutton called the Missouri State University Foundation. Before Christmas, the Lillian Jean Hilmes scholarship had been created.

“It was important to honor my daughter’s commitment to the theater and what MSU did for her. It really helped her be successful,” Sutton said.

After Lillian Hilmes graduated in May 2022 with a lighting design degree, she received a professional apprenticeship at The Juilliard School in New York as an assistant head electrician.

Hilmes now lives in Brooklyn. When she came home for the holidays, she was shocked.

“There were a lot of tears,” Sutton said.

It was an incredible surprise.

“It filled me with so much astonishment and joy that she would do something like this for me, and establish a legacy with this scholarship,” Hilmes said.

Sutton said she’s also proud to be establishing a scholarship in the arts because the arts are underfunded and are the heartbeat of a city.

Hilmes, a Bear legacy, felt at home at Missouri State University

Hilmes is a third-generation Bear. Both her dad and grandmother graduated from Missouri State University.

Her passion for theatre was sparked by her mother. Both of them were active in Springfield Little Theatre, or SLT. Sutton was a ballerina.

When Hilmes was 13, she told her mom she didn’t want to be on stage anymore — she wanted to run the show. So, she went to summer camps at SLT to learn technical skills behind the scenes.

In middle school and her freshman year at Central High School, she played volleyball.

“She went to so many volleyball camps on MSU campus that it felt like home for her. So that was it. She’s like, ‘Mom, why would I go anywhere else? MSU was like home for me. I know it. I love it,’” Sutton said.

And Hilmes continued to love it.

Hands-on experiences at MSU, and a fellow Bear, helped Hilmes on her path

Hilmes was initially an undecided major. She was thrilled when she realized she could transform her passion for theatre into a career. She received scholarships and lived in Scholars House the first two years.

“All the professors want to see you succeed,” Hilmes said. “They are so wonderful. I loved the program because it gives students the opportunity for real design.”

At a lot of schools, you don’t actually work on a show, she said.

“But at MSU, you work on a real show and people come to see it. If I hadn’t had that experience at MSU, I think I would be completely lost here (at Juilliard).”

After graduation, Hilmes planned to move to Chicago, but she got a call from another Bear, Seth Brown. Brown had been awarded the Juilliard apprenticeship the previous year, and said they were looking for people to apply. Hilmes landed it.

Hilmes is now thriving, which is no surprise to her mom.

“She’s a super-hard worker,” Sutton said. “Not a lazy bone in that girl’s body, and super sweet. She never gave us a minute of trouble growing up. She had scholarships throughout MSU. Always had a part-time job. She’s been a delight.” ▽

SIGHTS AND SCENES: FALL AND WINTER 2022-23

1. The women's swimming and diving team won its seventh-consecutive Missouri Valley Conference Championship in early 2023.

PHOTO BY KEVIN WHITE

2. Dr. Judith Martínez, an assistant professor in the department of world languages and cultures, led students in a discussion in December.

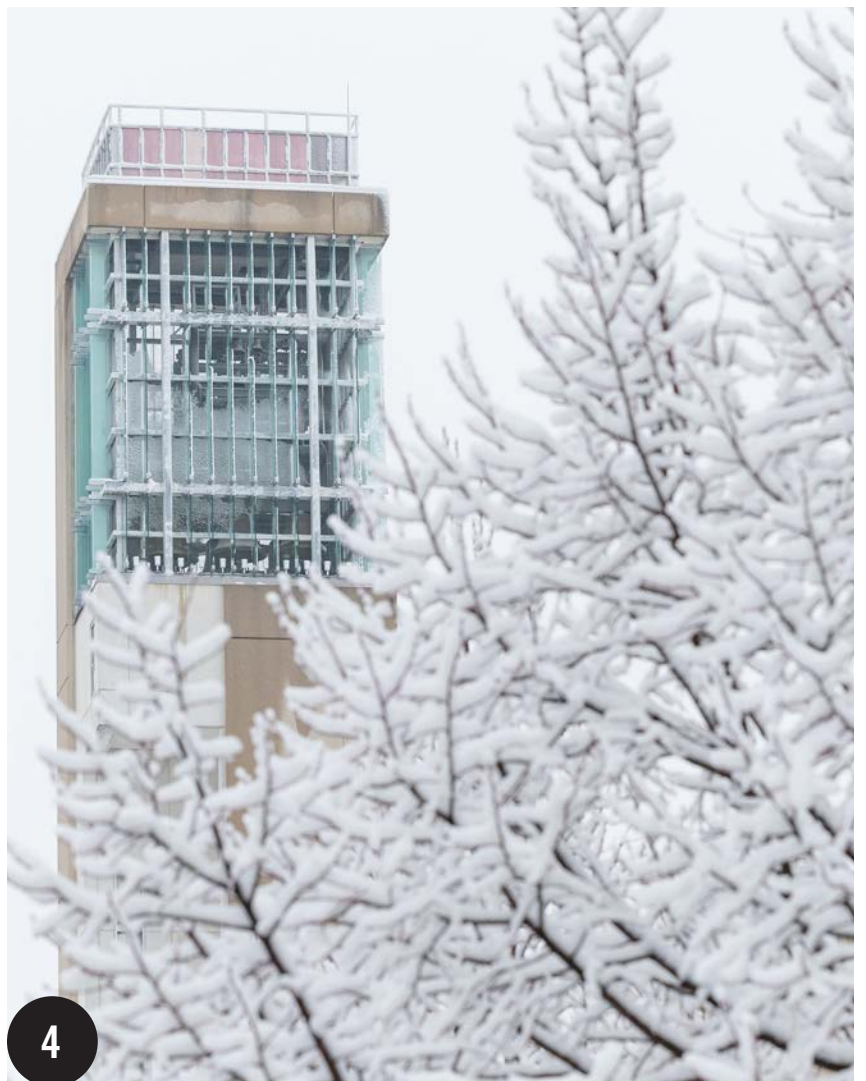
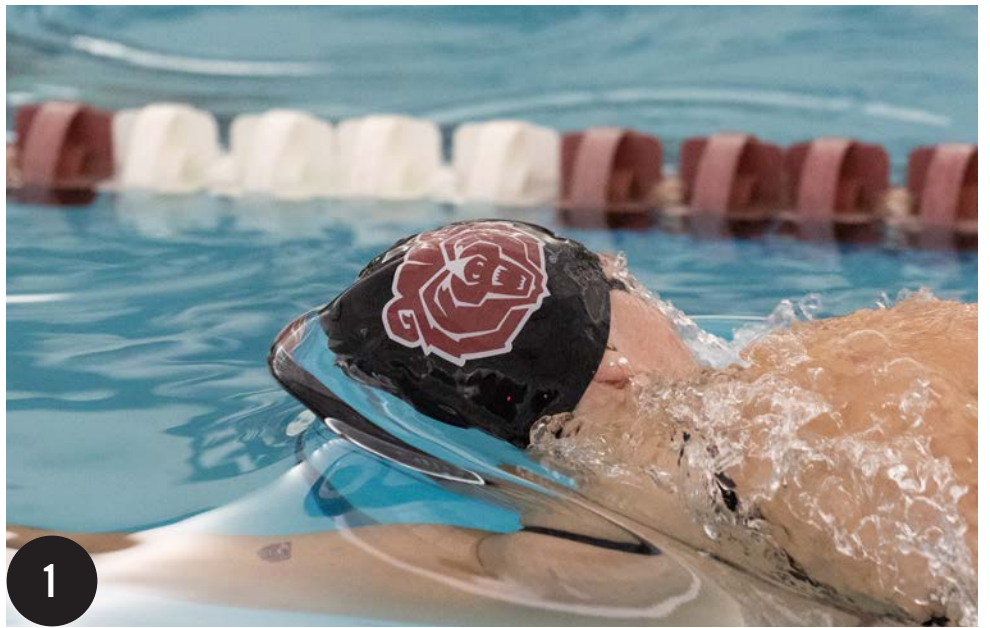
PHOTO BY KEVIN WHITE

3. Boris, a certified pet therapy cat, visited Meyer Library to help students decompress during finals week in December.

PHOTO BY JESSE SCHEVE

4. A winter storm moved through southwest Missouri on Jan. 24, 2023. Campus was blanketed in white, including the trees near the carillon.

PHOTO BY JESSE SCHEVE

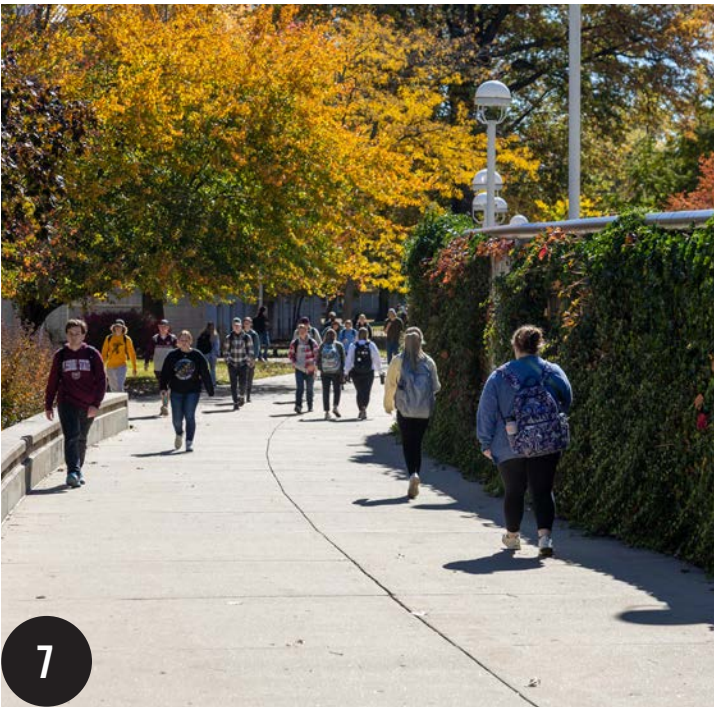




5



6



7

5. Homecoming royalty were Madeline Merrill and Ethan Gambriel. Merrill is a cell and molecular biology major who is involved in student government, Sigma Sigma Sigma sorority and more. Gambriel is a speech and theatre major who is involved in Delta Sigma Phi fraternity, student government, dance and other organizations. PHOTO BY KEVIN WHITE

6. Students perform in "Dreamland," an over-the-top, B-movie-style musical comedy about the declassification of Area 51. MSU alumnus and Broadway veteran Nathan Tysen wrote the lyrics for the show, which was presented on campus in November. PHOTO BY KEVIN WHITE

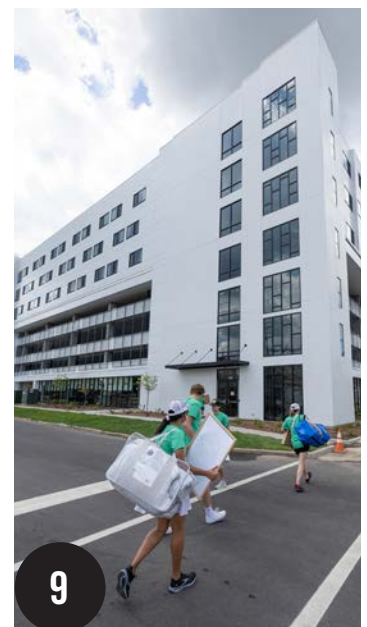
7. October brought gorgeous fall foliage to campus. PHOTO BY CREATIVE SERVICES

8. The men's soccer team claimed its third-straight Missouri Valley Conference Tournament title on Nov. 13, 2022. They defeated Evansville 1-0 to earn an NCAA Tournament berth for the fourth-straight year. PHOTO BY JESSE SCHEVE

9. Students moved into the new Heitz House for the first time in fall 2022. PHOTO BY JESSE SCHEVE



8

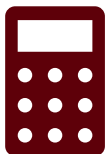


9

BY THE NUMBERS

OUR STUDENTS MAKE THEIR MISSOURI STATEMENT. YOU HELP PUT THEIR COST WITHIN REACH.

Missouri State University believes a quality education should be possible for all students regardless of income. Private support helps us achieve that goal!



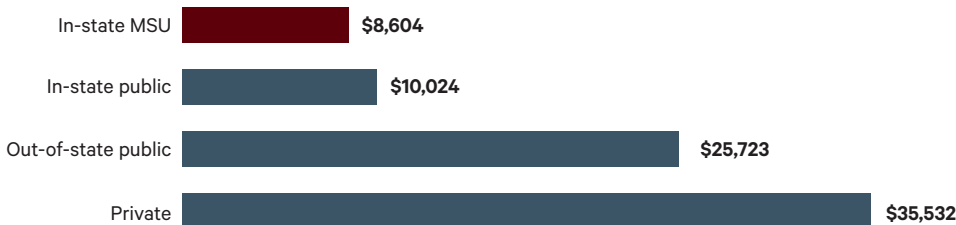
TYPICAL COSTS FOR UNDERGRADUATES

Our total costs are lower than most other universities in the state and well below the national average.

HOW WE COMPARE NATIONALLY: AVERAGE TUITION AND FEES

On average, our student body enrolls in 28 credit hours per year. Our annual costs are lower than the national average for four-year colleges.

MissouriState.edu/Costs



Source: College Board Trends in College Pricing 2021–22. Calculated estimates based on 28 credit hours



MISSOURI STATE UNIVERSITY IS AN AFFORDABLE OPTION IN OUR STATE

Source: Missouri Department of Higher Education and Workforce Development (dhewd.mo.gov/data/tuitionandfees.php)

| INSTITUTION COSTS | 2022-23 |
|--------------------------------------|----------------|
| U of Missouri-St. Louis | \$11,883 |
| U of Missouri-Kansas City | \$11,827 |
| Northwest Missouri State U | \$11,878 |
| Missouri U of Science and Technology | \$11,630 |
| U of Missouri-Columbia | \$11,603 |
| National average | \$10,940 |
| U of Central Missouri | \$9,360 |
| Missouri State U | \$9,138 |
| Southeast Missouri State U | \$9,015 |
| Truman State U | \$8,690 |
| Lincoln U | \$8,386 |
| Missouri Western State U | \$8,243 |
| Missouri Southern State U | \$8,026 |
| Harris-Stowe State U | \$6,808 |





A LOOK AT FOUNDATION SCHOLARSHIPS

For the 2022-23 academic year:

SPRINGFIELD

\$3,387,738

offered to

1,577 students

Average scholarship was

\$1,640

WEST PLAINS

\$286,579

offered to

154 students

Average scholarship was

\$1,077



TYPES OF MSU SCHOLARSHIPS

- **Foundation:** These scholarships were established by donors like you! They are awarded to students based on many factors, including major or academic area of interest; hometown, high school or home county; academic, extracurricular or leadership achievements; and financial need. These scholarships may be combined with any institutionally funded scholarships.
- **Automatic:** These are funded by the university for entering first-year students. They are automatically awarded to qualified students based on their grade point averages and test scores. These include the Board of Governors, Provost and Deans scholarships.
- **Competitive:** These are also funded by Missouri State for entering first-year students. However, students are selected for these awards based on outstanding achievements, interviews and other competitive criteria. The Presidential Scholarship, the most valuable award, is in this category.



Bears access

+\$150 million

in financial aid per year



Missouri State is ranked among

THE LOWEST IN STUDENT LOAN DEBT

in Missouri and the nation.

Source: LendEDU



what Pell Grant recipients from Missouri pay in tuition and fees with our new MoState Access Award

WE OFFER MANY TYPES OF AID FOR UNDERGRADUATE AND GRADUATE STUDENTS, INCLUDING:

- SCHOLARSHIPS
- GRANTS
- LOANS
- WORK STUDY
- GRADUATE ASSISTANTSHIPS



LIGHTNING ROUND

MEET Mark Wheeler

University architect and
director of planning, design and construction



Grew up: In Bowling Green, Kentucky

Education: Bachelor's in architecture, 2001, Drury University

Career: Started in residential contracting, then moved to hospitality architecture. Next, worked on buildings related to health care, especially surgery centers on the East Coast. Moved back to Springfield, and worked for a private firm that did a lot of work for MSU. "I actually designed a lot of projects on campus as a consultant." Joined the university in 2018.

Family: Wife Ky'a, married for 23 years (he is 46). Three kids: Madysen, who studies at Ozarks Technical Community College; Mason, who is in the U.S. Navy; and Emersen, 9. And a little dog, Stella.

Favorite building of all time?

Phillips Exeter Academy Library in Exeter, New Hampshire. It's by famous architect Louis Kahn. Most architects who walk into Temple Hall and see the atrium know Temple's architects were looking at Kahn. Temple is considered full brutalist architecture. Exeter is also in the brutalist movement.

Why do you connect with that building?

A lot of people have a negative reaction to brutalist buildings. But when you explain it, they see the value. There's an honesty and a purity. It's just cast-in-place concrete, so you see what you get. Nowadays, there's a lot of things that are kind of fake, whether it be Instagram filters or whatever. To me, brutalism is sincere. I find with students, there's this movement coming back to brutalism.

Favorite building on campus?

That's a hard one. I worked on the Welcome Center, so it's always near and dear to my heart. For the personal connection, Temple has to be one. But they're like your children. They're like all are awesome and unique in their own ways.

Texting or talking? Talking.

Favorite day of the week? Sunday.

Favorite city? Chicago.

Best vacation of all time?

Switzerland. Also, I took my oldest daughter on a foreign mission to Kenya. That was the most rewarding.

Three activities that would make a perfect weekend?

Reading. Being by myself — I'm an introvert. And spending time with family, either fishing or hiking.

Would you rather be able to speak every language or talk to every animal?

I would say talk to animals. I always wonder what squirrels think. Especially the ones on campus.

Favorite season? Definitely fall.

On a scale of one to 10, how much do you like to drive? It depends. I would say 8 most days. In Springfield, 2.

Place you most want to travel?

The Maldives.

You can only pick one. Movies, TV, gaming, or live music? Gaming — board gaming. Not video.

What never fails to make you laugh? "Looney Tunes."

What would be your spy code name? Big Wheel — because it's part of my last name, and I'm not small!

When people get up for standing ovation, are you one of the earlier people to stand up or one of the later? Later.

What's something you could eat for a week straight?

Cashew chicken. My favorite lately is Asian Hut.

Would you rather wake up to an air horn blowing in your ear every day for a week, or wake up and have to run four miles every day for a week? Geez. Air horn, man.

Would you rather be on a game show, a reality show, or stand-up comedy special? Reality show — let's go with "Survivor."

What inspires you? That's a big one. I'm inspired by a lot. I'm a religious person, so I'm inspired by scripture. I'm inspired by my family. By those who have overcome great difficulties in life to succeed. I'm inspired by a lot of Missouri writers, like Mark Twain.

What's the most boring thing ever? Accounting. I grew up with accountants, so that's meant to be endearing. My brother's an accountant. My dad's an accountant. My granddad's an accountant, and his dad was an accountant. So, I'm the black sheep of the family.

What is your favorite way to treat yourself? Probably food. I've sworn off cookies this year, and I've stayed with that so far. So, I'd have to go with sushi.

Biggest splurge ever? A trip. Island hopping to Puerto Rico and to some of the eastern Caribbean islands.

Could unlimited money buy you happiness? No.

What are your next projects? Temple Hall's the big one. We've got it broken up into two phases. We're about to start phase one. I am super excited about that one.

There are some downsides to Temple's brutalism style. It can feel like a bomb shelter or be really dark. With our addition and renovations, we'll highlight the positives and put science on display. Temple will be flooded with natural light.

We've got a project in Cheek Hall coming up that is potentially big.

And there's a secret one I can't talk about yet.

Fill in the blank. The architecture at Missouri State is: Unique.

Fill in the blank. Missouri State is: Amazing.

NOTES OF GRATITUDE



Your gifts make it possible for Bears to thrive.
They would like to say

THANK YOU

“I am in my second year majoring in criminology as part of a pre-law degree. As a first-generation student, scholarships help greatly with financial burdens. They also motivate me to continue towards my goals in life. Once again, I want to say thank you for the scholarship and recognition as this truly means more than any words can describe.”

- **Justin**, recipient of the College of Humanities and Public Affairs Scholarship Fund, Jeff Bess Memorial Scholarship, Norman M. Spiva Scholarship, and B. Frank and Ora Dale Ryan Gillette Scholarship

“The Judith Enyeart Reynolds Scholarship is the reason I’ve gotten to continue my education. It has truly altered the course of my life, and I cannot even begin to express my level of gratitude. The scholarship allows me to continue learning and growing as a student and citizen in our world. Thank you for this opportunity. I promise that I will do all that I can to make you proud. I know how fortunate I am to have received this gift, and I do not intend to waste it.”

- **Georgia**, recipient of the Judith Enyeart Reynolds Scholarship

“The Mr. Charles Rodgers and Mrs. Cindy Rodgers Scholarship is helping me stay in school — without financial aid, that would not be possible. I am honored and blessed to receive this scholarship, and I am so incredibly grateful for the time people took to even view my application. I know I can and will accomplish great things, and the opportunity to continue my education is now in part to the Mr. Charles Rodgers and Mrs. Cindy Rodgers Scholarship. Thank you so, so much.”

- **Katie**, recipient of the Charles and Cindy Rodgers Scholarship for the College of Business

“To be awarded the Bill Lacy Sigma Pi scholarship means more to me than just recognition of achievement. It means I joined a fraternity of men who truly care for each other. They want to see their brothers succeed and are willing to help in any way. Being awarded this money takes a financial burden off my family and I. It also allows me to commit more time to my studies and to being an active part of improving this fraternity and forming the chapter into its best version. I want to thank you all.”

- **Ethan**, recipient of the Bill Lacy Sigma Pi Scholarship

“I want to express how honored and grateful I am to have been selected as the recipient of the JMS Charitable Foundation Scholarship.

Ultimately, I want to become fully independent and apply for green cards for my parents. They have been living in Mexico for 11 years now, and my biggest wish is for them to be here with me. Thanks to your generous donation, I have more possibilities of reaching these goals.

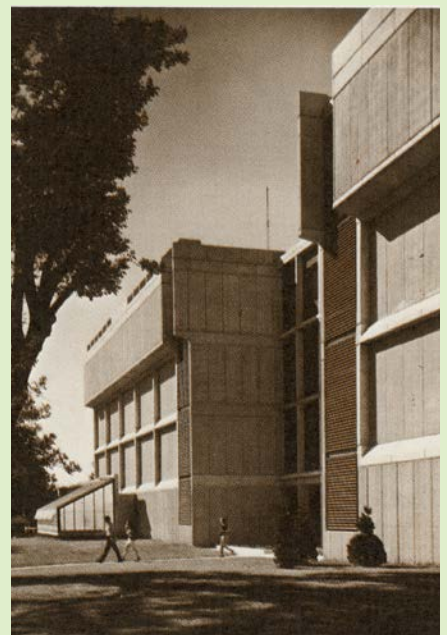
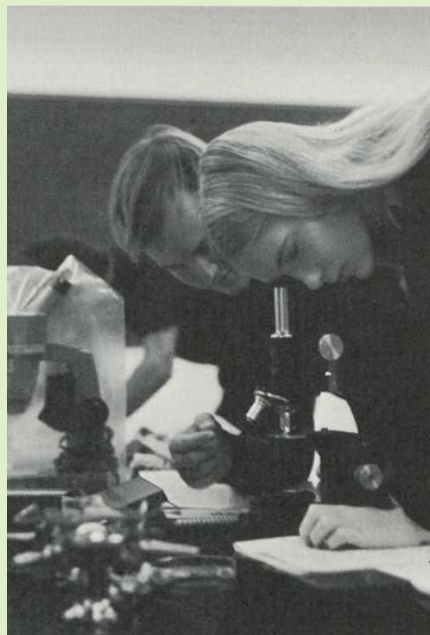
I also want to express how your gift has given me immense financial relief. It will allow me to reduce my work hours to focus more on my studies and have a more calm and enjoyable college experience.”

- **Giovanni**, recipient of the C. Louis and Thelma Ferrell Van Buren Scholarship and JMS Charitable Foundation Scholarship

THEN AND NOW

WE'RE THRILLED TO REMODEL AND ADD TO OUR SCIENCE FACILITIES

We held a groundbreaking ceremony in late 2022 for the newly named Roy Blunt Hall, formerly Temple Hall.



PHOTOS FROM MSU ARCHIVE MATERIALS

THEN: Students have studied science in Blunt Hall since 1971, which means it's more than 50 years old. It's even eligible for listing on the National Register of Historic places.

The hall has needed a remodel and addition for many years.

In late 2022, the building was renamed for U.S. Sen. Roy Blunt, a 1972 alumnus.

Blunt has a long history of supporting higher

education, Missouri State and research in health and life sciences.

In 2021, Blunt led efforts to appropriate more than \$56 million to support health, life and physical science research, teaching and facilities at MSU. From that \$56 million:

- \$3 million established an endowment to support College of Natural and Applied Sciences faculty members and research.

- \$50 million will finance the bulk of the work to expand and upgrade Roy Blunt Hall.

Temple Hall was first named after Allen Temple. He served as head of the university's science department for nearly 40 years in the early 1900s. Temple's legacy will be carried on with a prominent display in the building's atrium, which will bear his name.



RENDERING FROM BNIM ARCHITECTURE FIRM

NOW: The upcoming expansion project for Blunt Hall includes two phases: adding 77,000 additional square feet, and then renovating portions of the existing 126,000 square feet.

The addition will include:

- Modern and well-equipped labs.
- Office suites for some science departments.

- Office space for graduate students.
- Collaboration space for students and faculty.

“This project is a transformational change for the college,” CNAS Dean Dr. Tammy Jahnke said. “It will offer more space and upgraded facilities for everyone to continue working on interdisciplinary new ideas to solve real problems in science for the future.”

If all goes well, the heaviest construction will begin following spring 2023 commencement.

Blunt Hall is expected to be complete in spring 2025.

There will be many opportunities for private support of this project. If you are interested in contributing, please reach out to the Missouri State University Foundation.

THE STORY BEHIND A SCHOLARSHIP



"I love the creative vibrancy of people in theatre. They have this glow that spoke to me when I first entered and still affects me to this day."

Al Corley

AL CORLEY, continued from page 14

"The first half of my life revolved around basketball, my fraternity and girls," Corley said.

He was in Tau Kappa Epsilon and played on their intramural football team.

"The second half of my life happened as if the first half never existed. Theatre was my everything."

In his final two years at MSU, Corley focused on art, literature, music and theatre.

Starring on "Dynasty" and creating a production company

After his time at Missouri State, Corley went backpacking around Europe.

He then began a life in New York City, once working as a doorman at Studio 54 to pay for lessons at the Actors Studio.

"I had the once-in-a-lifetime opportunity to learn from a few of the greatest acting teachers of all time: Lee Strasberg and Stella Adler," Corley said.

He was a theatre actor in New York, then moved to Los Angeles.

He became famous for his role as Steven Carrington on the television show "Dynasty."

While he enjoyed his time in the limelight, Corley thought it best to have a backup plan. This led him to create the production company Code Entertainment. Through it, he's produced many films and worked with numerous stars.

"I attribute all of my success to Missouri State," Corley said. "Everything I do and everything I've done is because MSU gave me the opportunity to be great. It all started here."

Establishing a scholarship to help future Missouri State theatre students

In 2022, for the first time in 40 years, Corley returned to Missouri State — in fact, he was here twice in the same month.

He attended the John Goodman Amphitheatre dedication in October 2022 and reconnected with campus. He returned three weeks later for a basketball reunion.

The trip tied together both halves of his college career.

"I'd lost connection with my roots," Corley

said. "I realized that I wanted to give back to the place that gave me everything."

Corley decided to establish the Al Corley and Family Scholarship in Theatre. It is open to undergraduate students with majors in acting, musical theatre or theatre.

"I know how hard it was to be a full-time student who still needs to eat and pay for things. I just thought, if I could help a student in the theatre department and make it a little easier for them, it's the least I can do. I have the funds to give back, so I am. It's as simple as that," Corley said.

"There are an endless amount of people from Missouri State who've made a mark on my life. I want to do my part to help create a similar experience for others. When you get older, you look back more than you look forward. And when I looked back, I saw the shining impact Missouri State had on my life."

Corley hopes students who apply are fervent in their endeavors and have a deep love for the arts.

"Love it, man. You gotta love it," Corley said. "If you don't, then it's not worth pursuing." ▼

FOUNDATION LEADERSHIP



New members of the Board of Trustees attended an orientation event in January on campus.

PHOTO BY KEVIN WHITE

Six new members join the Board of Trustees

The Board of Trustees, the volunteer-based board that governs the Missouri State University Foundation, welcomed new members in early 2023. The board advises on gift planning, seeking private gifts and investing private funds. Alumni and friends of Missouri State who have demonstrated dedication or contributed to the university's development are eligible to become trustees. About the new members:



• **Dan Cobb**, class of 1984, is a retired chief technology officer. He helped build some of the first companies to provide software related to health care and medical information. He worked with Missouri State faculty members and many alumni along the way. Since retiring he has served on a variety of boards, including that of Missouri Technology Company, or MTC. MTC provides startup and seed funding to technology, biotech and ag-tech companies. It supports entrepreneurship through the state.



• **Tracey Jo Hollis** has lived near West Plains, Missouri, most of her life. Many of her family members have benefited from the MSU-West Plains campus. Hollis started a business, T.J. Swift House, Inc. in 1990. For 33 years, she has supported people with disabilities in the Rolla, Poplar Bluff, Alton and West Plains, Missouri, areas. Hollis, along with her children, provided a generous gift to help support a new West Plains program called ASCEND (Autism Support Can Empower New Directions). It increases resources for students with autism, and is the first program of its kind in southern Missouri.



• **Kay Alden Nelson**, class of 1970, has written for daytime television for more than 40 years. She has won six Daytime Emmy Awards and two Writers Guild Awards. She has been the head writer for "The Young and the Restless" and "The Bold and the Beautiful." On and off screen, she uses her platform to address issues such as homelessness, cancer and childhood poverty. Alden Nelson also comes back to Missouri State to teach classes and workshops.



• **Teresa and Richard Ollis**, both class of 1989, met as freshmen playing a volleyball game on campus. They married in 1991. Richard is CEO and chairman of his family business, Ollis/Akers/Arney Insurance Agency, a risk-management and employee-benefit insurance agency that has been in Springfield since 1885. Teresa earned a bachelor's in accounting. She is a long-time singer and vocal music advocate who sang with MSU's Concert Chorale as an undergrad. The couple has supported many areas across campus, including business, the arts and athletics. They also created a fund for musically inclined students.



• **Suzannah Pace**, class of 2009, is a business and quality analyst at Jack Henry & Associates. She and her mother, Sunie, provided a transformational gift for the Terry L. "Bo" Pace Industrial Science Center at Missouri State University's West Plains campus. Bo Pace was her father. The Paces have a long history of support for MSU-West Plains. ▽

2023 BOARD OF TRUSTEES

Members of the Board of Trustees are some of the most exceptional supporters of Missouri State University. Trustees advise us in gift-planning, seeking private gifts and investing private funds given for university projects and programs.



- | | | |
|-------------------------------|-----------------------------|------------------------|
| Dr. H. Douglas Adams | Martha A. Greene | Lisa C. Officer |
| Nita Jane Ayres | Dr. Matthew A. Harthcock | Michael L. Oldham |
| Gregory A. Beck | Rev. Dr. Paula Hartsfield | Richard Ollis |
| William K. Berry | Billy E. Hixon | Teresa Ollis |
| Thomas L. Black | Tracey J. Hollis | Timothy B. O'Reilly |
| Judy A. Breeding | Karen Horny | Dr. David W. Osborne |
| Margaret A. Burd | Ret. Col. Arthur D. Hurtado | Suzannah L. Pace |
| Brian Burlingame | Michael H. Ingram | M. Ann Page |
| Dr. Bonnalie Oetting Campbell | Gary D. Irwin | Dr. Peggy Pearl |
| David H. Capps | Gerald L. Jackson | Carol Pinegar |
| Joe Carmichael | Diane L. Jenkins | Anna Marie Presutti |
| Dan Cobb | Morgan Perry Jones | Scott M. Purvis |
| Ethel Curbow | Ann M. Kampeter | William L. Rowe Jr. |
| Susan Daniel | Beverly Keltner | Mary Hass Schrag |
| Kenneth J. Dotson | Jim Kendall | Patricia L. Sechler |
| Jacquie Dowdy | Gordon Kinne | T.J. Siebenman |
| Michael J. Duggan | W. Bryan Magers | Corrie Marie Sifers |
| Karen E. Dyson | Maxine McGruder | Dr. Susan Sims-Giddens |
| John F. Eilermann Jr. | David B. McQueary | Mark R. Stillwell |
| Kevin E. Elliott | Mark L. McQueary | Tina C. Stillwell |
| Marla J. Elliott | Mary McQueary | Thomas Strong |
| Tim Foote | Rick McQueary | Mary Asher Tearney |
| John D. Foster | Richard H. Miller | Bradley D. Thomas |
| Robert A. Foster | C. Michel Minor | Terry W. Thompson |
| Larry D. Frazier | Kyle Moles | Gary M. Tompkins |
| Travis Freeman | James L. (Pete) Morgan Jr. | Joseph W. Turner |
| Robert C. Fulp | Timothy J. Myers | John E. Wanamaker |
| J. Ryan Gamble | Kay Alden Nelson | Jack E. Weimer |
| Gary Garwitz | | James H. Wilson |
| | | James B. Wingfield |

MORE ABOUT THE TRUSTEES:
MissouriStateFoundation.org/Trustees

Executive committee



Mark McQueary
Chair



James H. Wilson
Chair elect



Judy Breeding



**Dr. Bonnalie Oetting
Campbell**



Tim Foote



John D. Foster



Diane Jenkins



Beverly Keltner



Mary Hass Schrag



Joe Carmichael
Immediate past chair, ex-officio



Clif Smart
President, Missouri State
University, ex-officio



Dr. Anson Elliott
Board of Governors, Missouri
State University, ex-officio



Brad Coy
Alumni Association, Missouri
State University, ex-officio



Brent Dunn
Executive director
of the Missouri State
University Foundation



Steve Foucart
Treasurer



Cindy Busby
Secretary

Committee chairs



EXECUTIVE COMMITTEE
Mark McQueary



AUDIT COMMITTEE
Judy Breeding



DEVELOPMENT COMMITTEE
Beverly Keltner



**FINANCE/INVESTMENT
COMMITTEE**
Diane Jenkins



GOVERNANCE COMMITTEE
James H. Wilson



STEWARDSHIP COMMITTEE
Ann Page

DENISE KETTERING, DIRECTOR OF ADVANCEMENT SERVICES



ABOUT

- **MSU alumna: Bachelor's in accounting, 1991**
- **Hometown: Marshfield, Missouri**

CAREER

Started as an accountant outside the university; joined MSU development and alumni office in 1996.

BEAR SIBLINGS

- **Brent Thomas, bachelor's in 1984 – Former Baseball Bear; retired MSU assistant baseball coach; MSU Athletics Hall of Fame**
- **Alan Thomas, master's in 1997 – Marshfield, Missouri, retired superintendent of schools**

How has Missouri State changed since you were a student?

The infrastructure has grown, and it is exciting to see the new buildings and needed renovations. But still, whenever I am on campus, I feel like I could be on my way to class as a student because there are so many things that remind me of those days. I feel a nod to the past and can recall fun traditions, but also know that we are moving forward for the students of today and tomorrow. But MSU still feels like where I started school!

Describe what you do for the university.

Data management and financial services for the Missouri State Foundation and Alumni Association. I manage a team that processes information related to donor gifts, and provides tax documents and financial reporting. My accounting degree is an excellent foundation for what I do! Information security and management is also part of the job. We keep up-to-date contact information for engagement with our alumni and friends. We are custodians of this data, and provide it to our colleges, departments, programs, teams and organizations to assist with their outreach and communication efforts.

What is the most meaningful part of your job?

Seeing the impact private support can have for students, faculty and programs! Especially the expanded opportunities for students, such as scholarships. You can see in action where students start and where they go thanks to those awards through the Missouri State University Foundation. That makes me so proud to work here.

Tell us about your family.

Well, my husband Lance, we met here (points) — right down the hallway. He's an alum who got his undergrad and his MBA here. He worked in MSU athletics marketing and development for about 12 years. He's now the executive director of the Springfield Sports Commission. We have an 18-year-old son, Brooks, who is graduating from Glendale High School.

What is your life like outside of work?

Brooks is our only child. So, we follow his lead and really love what he is involved in. He's the greatest thing I've ever done, and I think he's a good kiddo.

Lance and I have always loved baseball. Well, just about any sport, really. We have traveled around states watching Brooks play baseball and hockey since he was about 5. He is finishing up at Glendale High School this spring and will attend and play baseball at Southeast Missouri State next year.

When we are not watching Brooks play, we generally head to watch a game somewhere. Most of the time it's north to Minnesota to watch the Vikings, Wild or Twins. Lance is an Iowa native and grew up loving Minnesota teams, and now Brooks loves them too. I still love the St. Louis Cardinals and Kansas City Chiefs.

You're retiring June 1. What are you most proud of after almost 30 years?

I'll get emotional talking about this. I'm a crier, anyway. I would say the growth at the university and the impact on students and the community. But most of all, the relationships I have with work colleagues, alumni and friends of the university. After 27 years, you get to know people. They all mean a lot to me. Work family is important too! I feel like a gift was given to me to have enjoyed nearly my entire career at my alma mater. My MSU mentors made a huge impact on me. I never thought I would be here this long. And I am so glad that I was. ▽

Advancement staff



Debbie Branson
Director of
Foundation Relations

DebbieBranson@MissouriState.edu



Scott Carter
Director of Development

ScottCarter@MissouriState.edu



Jacqui Coones
Executive Director of Prospect
Management

JacquiCoones@MissouriState.edu



Kerry Dickerson
Senior Director of
Athletics Development

KerryDickerson@MissouriState.edu



Katie Dudden
Assistant Director of Donor
and Alumni Relations,
MSU-West Plains

KatieDudden@MissouriState.edu



W. Brent Dunn
Executive Director,
Missouri State University
Foundation; Vice President for
University Advancement

BrentDunn@MissouriState.edu



Greg Fansler
Executive Director of
Engagement and
Alumni Relations

GFansler@MissouriState.edu



Wendy Ferguson
Assistant Vice President for
Development and Strategy

*WendyFerguson@
MissouriState.edu*



Arianna Gardner
Assistant Director of
Student and Young
Alumni Engagement

AriannaGardner@MissouriState.edu



Paige Grisham
Director of
Athletics Development

*PaigeGrisham
@MissouriState.edu*



Alison Harper
Director of Annual Funds

AlisonHarper@MissouriState.edu



Cindy Howell
Director of Development

CindyHowell@MissouriState.edu



Patty Ingle
Director of Development

PattyIngle@MissouriState.edu



Denise Kettering
Director of
Advancement Services

*DeniseKettering@
MissouriState.edu*



Lindsey McDaniel
Assistant Director of
Prospect Development

LindseyMcDaniel@MissouriState.edu



Kelsey Menefee
Director of Donor Relations
and Special Events

KelseyMenefee@MissouriState.edu



Beth Nichols
Assistant Director, Chapter
and Corporate Engagement

BethNichols@MissouriState.edu



Rachel Peterson
Director of Development and
Annual Giving MSU - West Plains

RachelPeterson@MissouriState.edu



Angela Pinegar
Assistant Director of
Advancement Services

AngiePinegar@MissouriState.edu



Angela Rowe
Strategic Communications
and Content Specialist

AngelaFrizzell@MissouriState.edu



Karl Schmidt
Executive Director of Major
and Planned Giving

KarlSchmidt@MissouriState.edu



Natalie Seever
Business Process and Reporting
Analyst-Advancement

NatalieSeever@MissouriState.edu



Stephanie Smith
Senior Director of Donor
Relations and Special Events

StephanieSmith@MissouriState.edu



Jo Spurrier
Director of Leadership
Annual Giving

JoSpurrier@MissouriState.edu



Abby Wilken
Assistant Director of
College and Constituency
Engagement

AWilken@MissouriState.edu

Cindy Busby
Executive Assistant to
the Vice President and
Building Manager

Kimberly Clark
Document and
Report Specialist

Amy Daniels
Foundation Senior
Accounting Analyst

Mike Ferguson
Building Foreman

Debra Goodwin
Administrative Assistant III

Don Hendrickson
Advancement Applications
and Data Analyst

Marla Fritz
Administrative Assistant II

Kathy Miller
Records Supervisor

Barbie Penn
Administrative Specialist II

Malinda L. Piilola
Administrative Specialist II

Cindy Schull
Director - Grants and
Foundation Accounting

Kelly Smulczynski
Administrative Assistant II

Debbie Underwood
Foundation Senior
Accounting Analyst

Robin Wilson
Administrative Assistant II

Missouri State University Foundation

300 S. Jefferson Ave., Suite 100
Springfield, MO 65806



MAROON SPIRIT IN BLACK TIE IS BACK!

MAKE YOUR PLANS FOR THE SPRINGFIELD MAROONATION BALL


MarooNation Ball galas are black-tie optional events filled with live entertainment, mingling, dining and dancing. All proceeds benefit scholarship support for current and future Missouri State students.

Join us in Springfield:

OCT. 6

GET TICKETS OR BECOME A SPONSOR

 MissouriState.edu/MarooNationBall

 417-836-4143